



SPRING CONFERENCE

26

**RESILIENT
BY DESIGN**

APRIL 8-10, 2026
RUBY'S INN
BRYCE CANYON, UTAH

WELCOME



BRYCE CANYON, UTAH

Ruby's Inn

SPONSORS

THE 2026 APA UTAH SPRING CONFERENCE
IS MADE POSSIBLE BY GENEROUS SUPPORT FROM:

PARTNER
SPONSOR



Office of the Property
Rights Ombudsman
UTAH DEPARTMENT OF COMMERCE

PLATINUM

SNELL
& WILMER

GOLD

FFKR ARCHITECTS

GSBS



UTAH LEAGUE OF
CITIES AND TOWNS

SILVER

GRANICUS



MHTN
ARCHITECTS

PSOMAS



WILSON
& COMPANY
HIGHER RELATIONSHIPS

BRONZE



GOVERNOR'S OFFICE OF
Planning & Budget

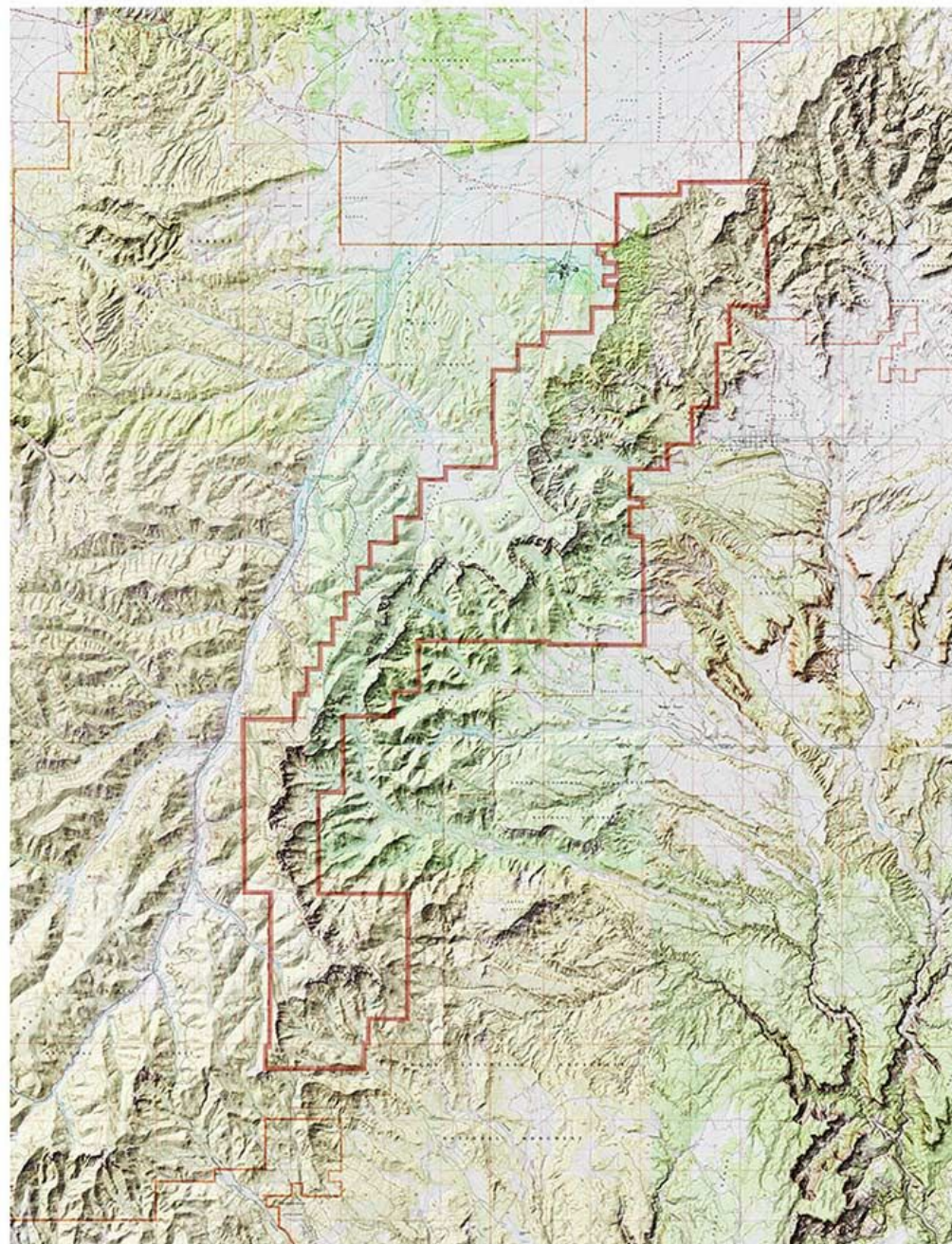


THANK YOU TO
OUR PARTNERS
AND SPONSORS!

CONFERENCE PLANNING COMMITTEE

Liz Sodja
Cory Shurtleff
Kaden Figgins
Anna Maki
Tom Dansie
Brock Jackson
Mckay Muhlestein
Brian Carver
Carla Wiese
Meagan Booth

BRYCE NATIONAL PARK





THANK YOU, NICOLE!

Nicole has been a wonderful part of the Utah APA Chapter and has worked as our Chapter Executive Manager for the past four years. She is recognized for her strong leadership and has organized many conferences. She led the largest Utah APA Fall Conference and the popular Spring Conferences across the state. We truly appreciate Nicole's hard work and dedication—she's the person behind all our successful events!

If you need help or have questions about the conference logistics, program, or anything else, please contact Nicole or anyone on the Executive Committee. We want to make sure your experience is smooth and enjoyable!

APA UTAH BOARD



JASON BOAL, AICP
CHAPTER PRESIDENT



MEAGAN BOOTH
VICE PRESIDENT
PARTNERS & AFFILIATES



SCOTT HILL
ADMIN & FINANCE



MIKE GOTTFREDSON, AICP
MEMBERSHIP



TED KNOWLTON, AICP
MEMBERSHIP



FRANCIS LILLY
LEGISLATIVE



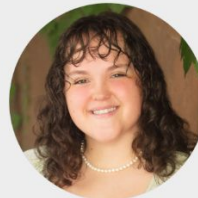
ERIKA CHMIELEWSKI
COMMUNICATION



BRUCE PARKER, AICP
PROFESSIONAL DEVELOPMENT
ETHICS OFFICER AND AICP EDUCATION



CHRIS HUPP
PROFESSIONAL DEVELOPMENT
PROGRAMS



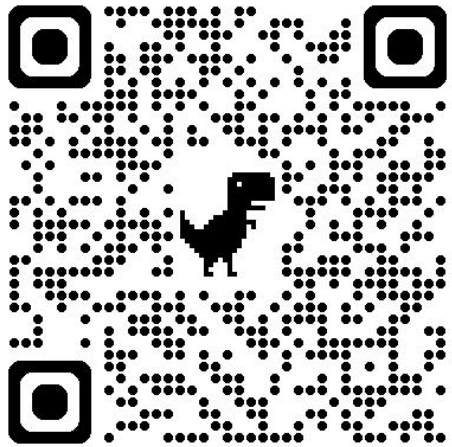
KATHERINE WENTWORTH
CO-STUDENT REPRESENTATIVE



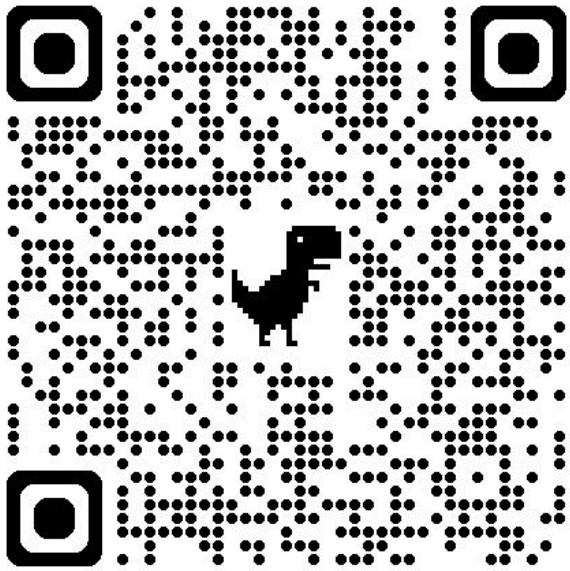
VANN CLARK
CO-STUDENT REPRESENTATIVE



TIPPE MORLAN, AICP
PAST PRESIDENT



OPEN
VOLUNTEER
POSITIONS



Engagement Groups

- Commissioner Chat
- Transportation Roundtable
- Early Career Planners
- Beyond City Limits

Meet at least quarterly

STUDENT POSTER PROJECTS

Utah State University's Student Poster Projects

Ebenezer's Barn & Grill

Networking Social & Student Poster Showcase – University of Utah

Join us at the University of Utah for a networking social and student planning poster showcase

- Date: April 22, 2026
- Location: The University of Utah, College of Architecture + Planning, 375 1530 E. SLC, UT 84112
- Time: 6 PM

2026 ELECTIONS

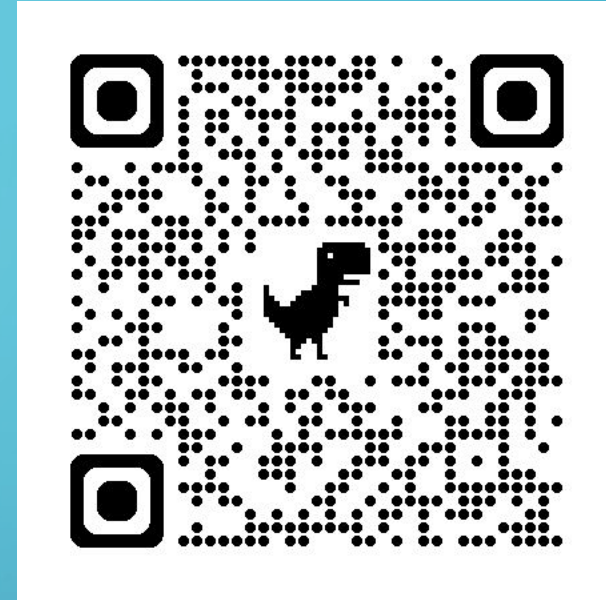
April 10: Nominations Site opens

May 8: Nominations Site closes

June 5: Final Slates due to APA

August 5: Election Opens

September 4: Election Closes



Positions to be elected in 2026:

President

Vice President

Board Member



CORPORATE EVENTS AT BRYCE CANYON

RUBY'S INN • 877-854-5808

**A GREAT PLACE FOR YOUR
CONFERENCE | CONVENTION | RECEPTION**



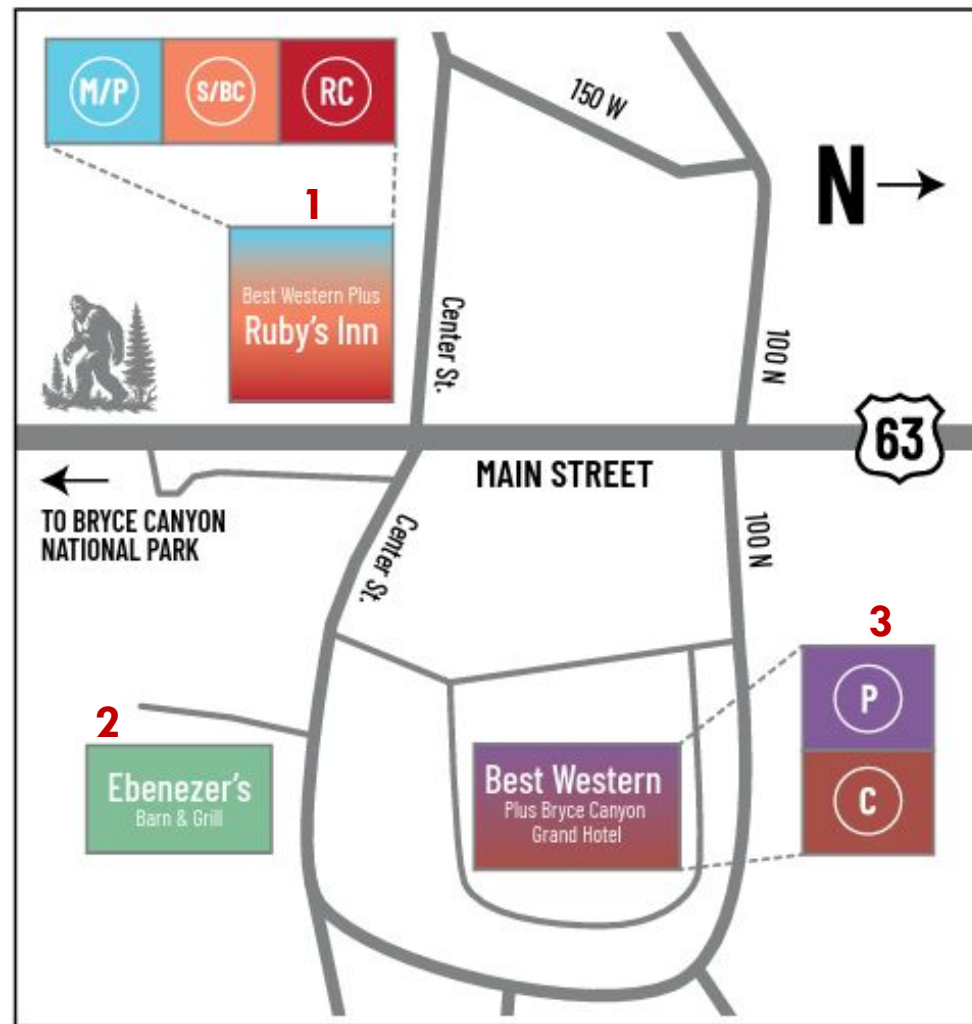
- ★ **ONE SCENIC LOCATION**
 - LOCATED 1 MILE FROM BRYCE CANYON
- ★ **THREE SEPARATE VENUES**
 - ① RUBY'S INN
 - ② BRYCE CANYON GRAND
 - ③ EBENEZER'S BARN & GRILL

- ★ **OVER 14,000 SQ FT OF
CONFERENCE SPACE**
 - STATE-OF-THE-ART AUDIO & VISUAL EQUIPMENT
 - FOOD-SERVICE CATERING
 - ON-SITE ENTERTAINMENT
 - CUSTOMIZABLE DINING/CONFERENCE SPACE
 - MULTIPLE BREAK-OUT ROOMS

ACTIVITIES KEY

- | | | |
|----------------------------------|----------------------------------|--------------------------------|
| ① Ruby's Inn General Store | ⑤ Horse Corral | ⑨ Campground |
| ② Cowboy's Buffet and Steak Room | ⑥ Ruby's Winter Adventure Center | ⑩ Bryce Canyon Shuttle Parking |
| ③ Canyon Diner | ⑦ Ebenezer's Barn and Grill | ⑪ Sinclair Auto Care Center |
| ④ Old Bryce Town Shops | ⑧ Rodeo | |

RUBY'S INN, EBENEZER'S, BEST WESTERN BRYCE CANYON, UT



- | | | |
|---------------------------------|----------------------|---------------------|
| M/P MANZANITA / PINION | RC RED CANYON | C COTTONWOOD |
| S/BC SAGE / BRISTLE CONE | P PONDEROSA | |



Resilient by Design

APA Utah Spring Conference 2026



RESILIENT BY DESIGN
Engineering the Future of Water Storage Against Environmental Extremes

SOLICO TANKS



8 STEPS TO BECOME MORE RESILIENT

@agrassoblog

<p>1</p> <p>ACCEPT CHANGE</p> <p>Find ways to become more comfortable with change.</p>	<p>2</p> <p>BECOME A CONTINUOUS LEARNER</p> <p>Learn new skills, gain new understanding and apply them in times of change.</p>	<p>3</p> <p>TAKE CHARGE</p> <p>Take charge of your own career and your own development.</p>	<p>4</p> <p>FIND YOUR SENSE OF PURPOSE</p> <p>Helps you to assess setbacks within the framework of a broader perspective.</p>
<p>8</p> <p>SKILL SHIFT</p> <p>Reframe how you see your skills, talents and interests.</p>	<p>7</p> <p>REFLECT</p> <p>Reflection fosters learning, new perspective and self-awareness.</p>	<p>6</p> <p>CULTIVATE RELATIONSHIPS</p> <p>Develop and nurture a broad network of personal and professional relationships.</p>	<p>5</p> <p>PAY ATTENTION TO SELF-IDENTITY</p> <p>From your identity apart from your job.</p>

data source: CCLdotORG

Why “Resilient by Design”?

- Rapid change
- Uncertainty and disruption
- Institutional strain
- Community expectations
- Need for proactive planning

A WORLD THAT FEELS UNSTEADY

“The future is unwritten.”

— **Joe Strummer** (the Clash) and A central takeaway from recent public conversations on democracy, instability, and civic life

Instability does not automatically mean collapse.

It means we are in a moment where **institutions matter, civic action matters, and design matters.**

WHEN SYSTEMS ARE UNDER PRESSURE...

- People look for certainty
- Communities need coordination
- Institutions are tested
- Good planning becomes more—not less—important



A Willow Tree in Michigan

THE WILLOW AND THE OAK

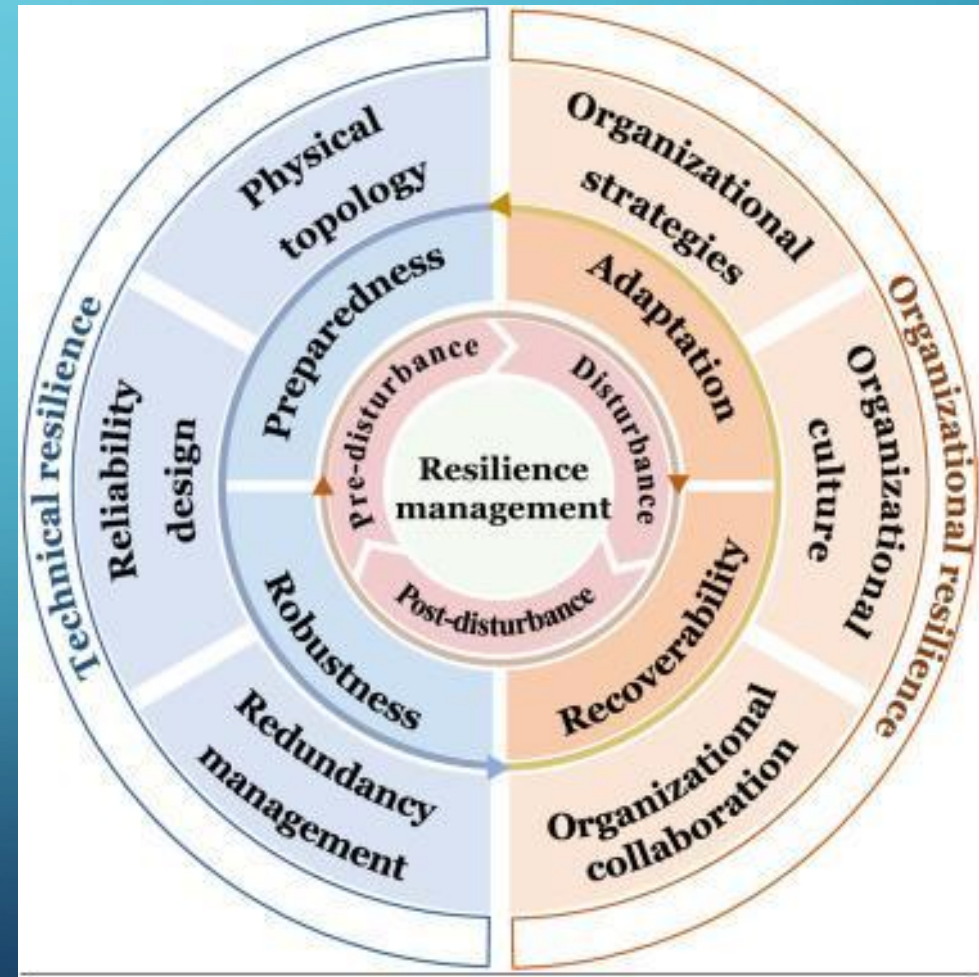


- The Oak resists
- The Willow adapts

Are we designing communities like oaks—or like willows?

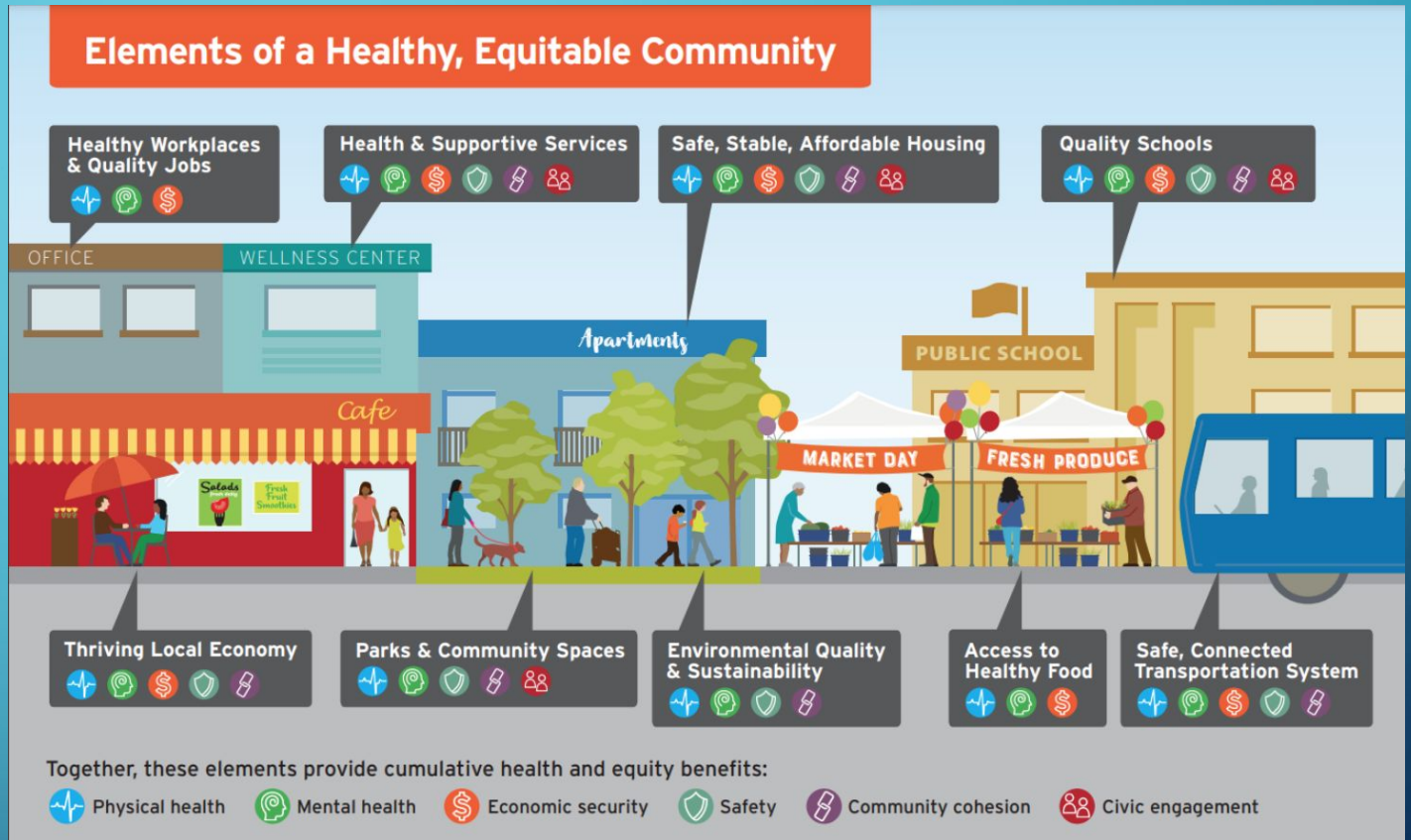
RESILIENT BY DESIGN MEANS...

- Adaptability
- Redundancy
- Strength
- Interconnection
- Preparedness



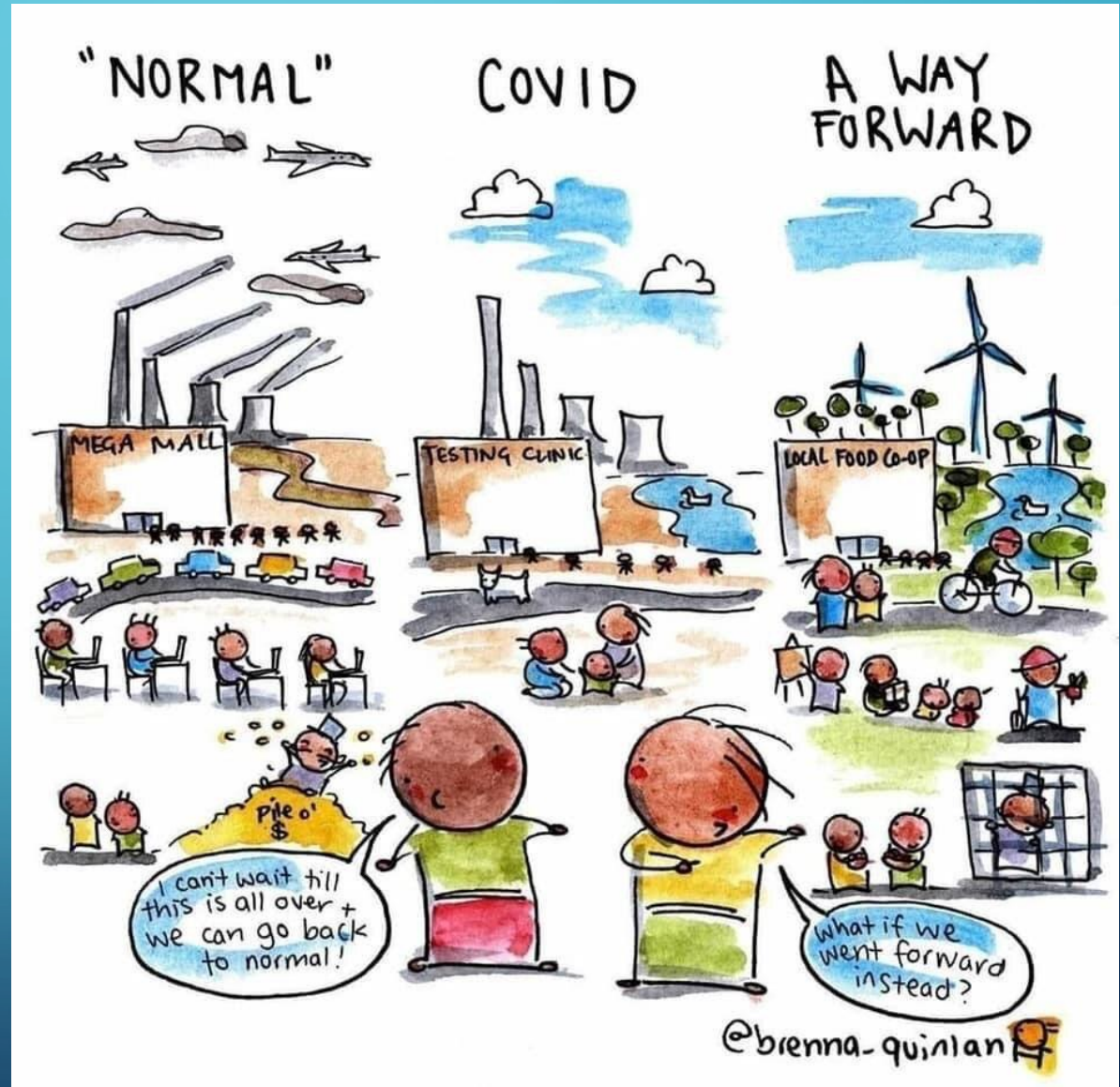
FOR PLANNERS, RESILIENCE REQUIRES...

- Long-range thinking
- Cross-sector coordination
- Scenario planning
- Institutional trust
- Human-centered design



RESILIENCE IS NOT JUST RECOVERY

- Not just “How do we restore?”
- But “How do we improve?”



RESILIENCE IN UTAH COMMUNITIES

- Water planning
- Wildfire and natural hazard mitigation
- Housing strategy
- Transportation and growth management
- Economic adaptability
- Community-centered implementation



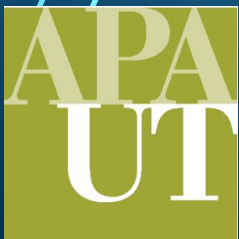
RESILIENCE IS ALSO HUMAN

- Creativity
- Collaboration
- Institutional courage
- Public trust
- Civic persistence



THIS CONFERENCE IS PART OF RESILIENCE

- Learn from each other
- Share tools and ideas
- Build professional networks
- Strengthen practice
- Strengthen communities



A CHALLENGE FOR ALL OF US

Design “communities” that can:

- adapt,
- endure,
- recover,
- and emerge stronger.



BE LIKE THE WILLOW



Flexible. Rooted. Designed to endure.



26
SPRING CONFERENCE

**RESILIENT
BY DESIGN**

APRIL 8-10, 2026
RUBY'S INN
BRYCE CANYON, UTAH

WELCOME



