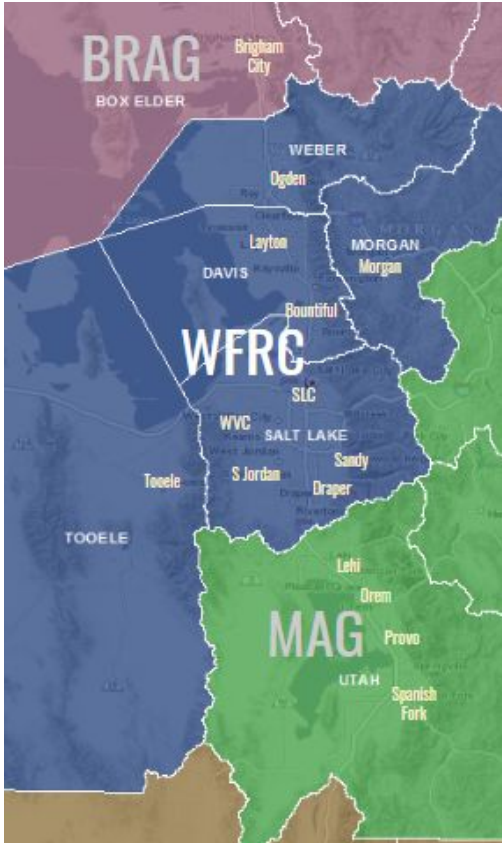


# Utah's Associations of Governments

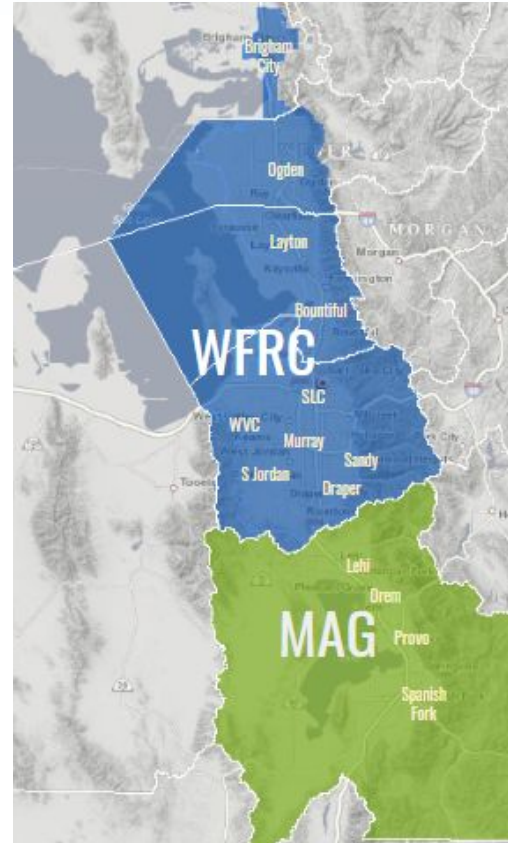
.....  
APAUtah Spring Conference 2024

# WFRC Association of Governments and Metropolitan Planning Organization

as  
AOG



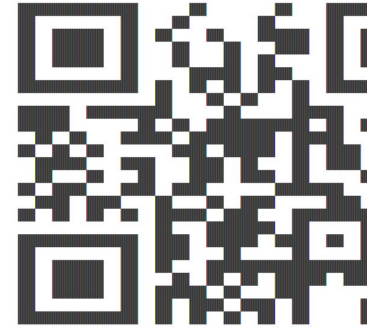
as  
MPO





# WASATCH CHOICE

— VISION —



*Utah is growing . . . and we have a plan!*

[wasatchchoice.org](https://wasatchchoice.org)



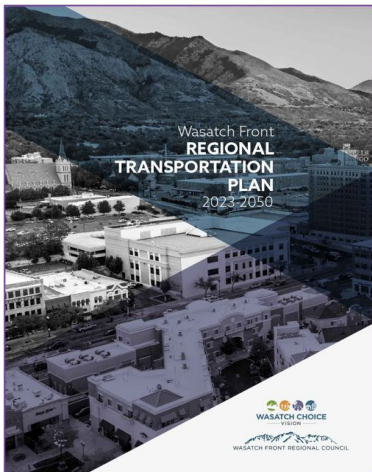


# WASATCH CHOICE

— VISION —

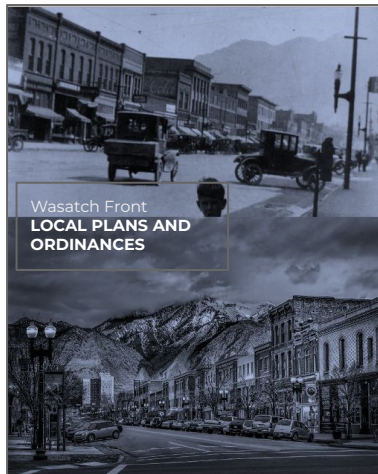
Transportation

Regional Transportation Plan



Land Use

Transportation & Land Use Connection

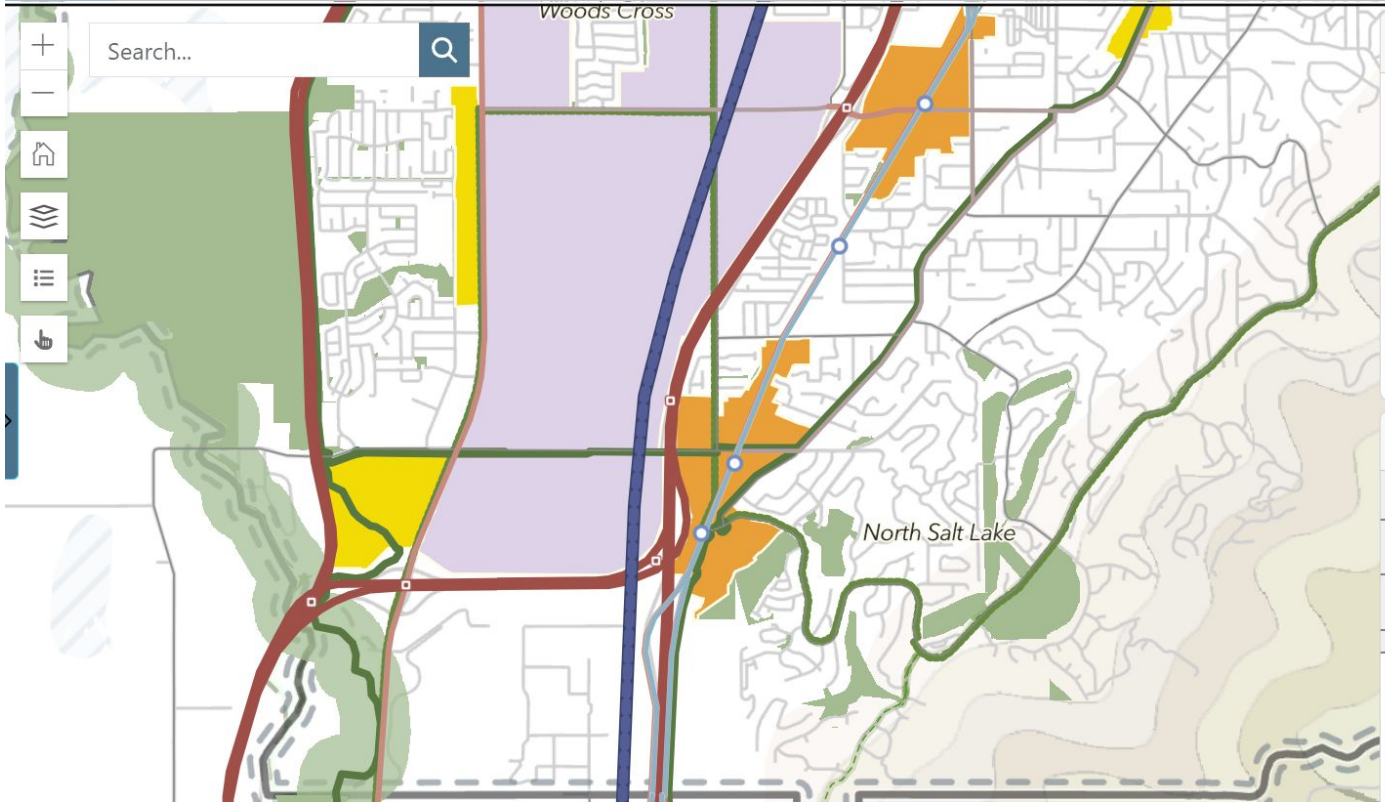


Economic Development






Comprehensive Economic Development Strategy



- Vision**
- Transportation
- Centers & Land Uses
- Economic Opportunities
- Parks & Public Spaces
- +



Filter [reset](#) ✕

- Transportation
  - Roads 
  - Transit 
  - Bike/Ped 
- Land Use
  - Centers 
  - Other Land Uses 

Map Features Found: ✕

**Core Route**

**Other Principal Arterial**

**City Center: North Salt Lake Town Center**

# WFRC Programs for Local Governments



CONGESTION MITIGATION AND  
AIR QUALITY PROGRAM



SURFACE TRANSPORTATION  
PROGRAM



TRANSPORTATION  
AND  
LAND USE CONNECTION



TRANSPORTATION  
ALTERNATIVES PROGRAM



CARBON REDUCTION  
PROGRAM

**R6**

**LOCAL**  
**ADMINISTRATIVE**  
**ADVISOR**



# Regional Growth Summit

## Breakout Sessions

Room	Session 1:	Session 2:	Session 3:
Arena	Land Use A - <i>Brent Bateman</i>	Land Use A - <i>Brent Bateman</i>	Land Use A - <i>Brent Bateman</i>
Theatre	Best Legal Practices, Q&A- <i>Matthew Church</i>	Best Legal Practices, Q&A- <i>Matthew Church</i>	Best Legal Practices, Q&A- <i>Matthew Church</i>
108	Land Use B - <i>Marcie Jones &amp; Rick Plehn</i>	Code Enforcement - <i>Jordan Cullimore &amp; Rob Terry</i>	Code Enforcement - <i>Jordan Cullimore &amp; Rob Terry</i>
109	Land Use C - <i>Craig Call</i>	Land Use C - <i>Craig Call</i>	Land Use B - <i>Marcie Jones &amp; Rick Plehn</i>
187	Subdivisions - <i>Meg Ryan</i>	Subdivisions - <i>Meg Ryan</i>	Subdivisions - <i>Meg Ryan</i>
203	Taxes/Revenue - <i>Seth Atkinson</i>	Taxes/Revenue - <i>Seth Atkinson</i>	Taxes/Revenue - <i>Seth Atkinson</i>
204	Budget/Finance - <i>Dave Sanderson</i>	Budget/Finance - <i>Dave Sanderson</i>	Budget/Finance - <i>Dave Sanderson</i>
205	Economic Development - <i>Greg Bisping, Kenley Steck, Lance Soffe</i>	Legislative Update - <i>Molly Wheeler</i>	Legislative Update - <i>Molly Wheeler</i>
206	Risk Management, OPMA- <i>Johnnie Miller</i>	Risk Management, OPMA- <i>Johnnie Miller</i>	Economic Development - <i>Greg Bisping, Kenley Steck, Lance Soffe</i>





M A G

# Technical Assistance to Governments

# TAG



# PLANNING FOR GROWTH

Technical assistance is available to local governments throughout Utah, Summit, and Wasatch Counties for plans and studies that proactively address growth related challenges.

Competitive projects integrate transportation and land use in a meaningful way and align with the region's long-range plans: Wasatch ChoiceVision and TransPlan50.





# Details

## Available Funding

- Up to \$1,000,000 annually, depending on number and quality of applications received
- Assistance is provided in the form of consultant services procured by MAG on behalf of the local government.

## Minimum/Maximum Project Size

- \$50,000 to \$300,000

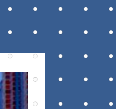
## Local Match Requirement

- 6.77%

## Selection Process

- Annually - Fall of 2024





# Sample Projects

- Small-area plans
- Corridor plans
- Multimodal plans
- Zoning ordinance/policy updates
- Conceptual design for specific projects



# Cycle II Projects

<b>City</b>	<b>Project Name and Description</b>	<b>Budget</b>
Oakley	State Route 32 Corridor and City Centers Plan	\$150,000
American Fork	American Fork FrontRunner Station Area Plan Phase II and General Plan Land Use and Transportation Element Update	\$214,000
Alpine	Alpine City Main Street and Gateways Plan	\$107,500
Payson	Nebo Beltway Area Plan	\$250,000
Vineyard	Southeastern Corridor Master Plan and Citywide Active Transportation Wayfinding Plan	\$129,000
Eagle Mountain & Saratoga Springs	West Utah County Growth and Mobility Vision	\$214,000
Provo	Station Area Planning, Phase II	\$124,925



# WFRC - TLC

The Transportation and Land Use Connection (TLC) program is a partnership between the Wasatch Front Regional Council (WFRC), Salt Lake County, Utah Department of Transportation (UDOT), and Utah Transit Authority (UTA).

The TLC program provides technical assistance to local communities to help them achieve their goals and plan for growth. The program helps communities implement changes to the built environment that reduce traffic on roads and enable more people to easily walk, bike, and use transit. This approach is consistent with the **Wasatch Choice Vision** and helps residents living throughout the region enjoy a high quality of life through enhanced mobility, better air quality, and improved economic opportunities.

# UDOT - Technical Planning Assistance

UDOT offers funding for technical planning assistance to local governments in Utah, especially to those that are experiencing rapid growth and/or lack sufficient resources to carry out planning projects on their own. These funds are awarded on a competitive basis. Eligible project types include:

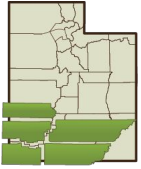
- Community Visioning Projects
- Transportation Master Plans
- Active Transportation/Multimodal Plans
- Corridor Plans/Solutions Development Processes
- General Plans
- Zoning Code Updates
- Small Area Land Use/Transportation Plans



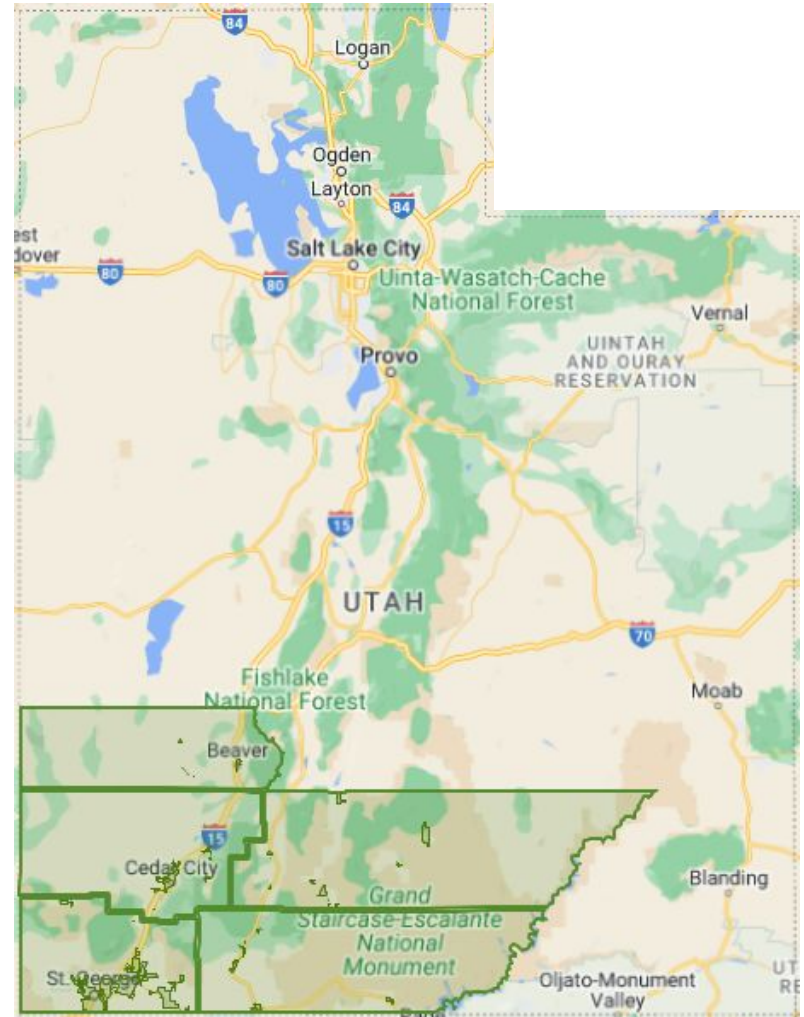
# Transportation Improvement Program

Fund transportation projects throughout Utah County.

- Roads
- Active Transportation
- Transit
- **Transportation Studies**



# Five County Association of Governments

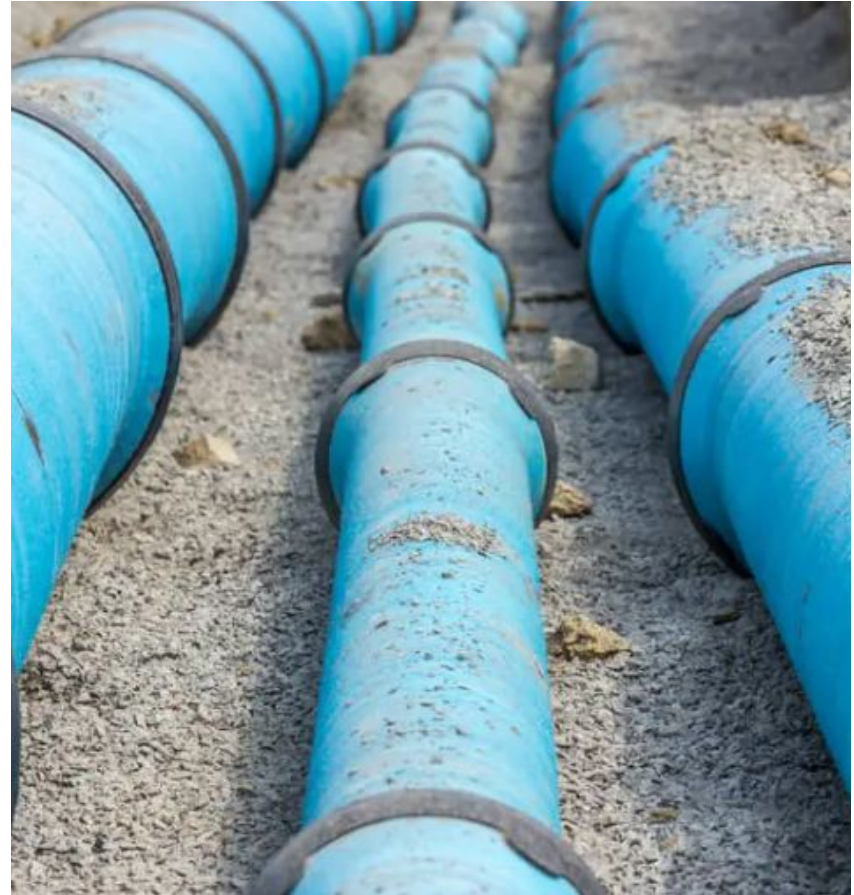




# CIB & RPP

---

- Mission
- Planning/Community Support



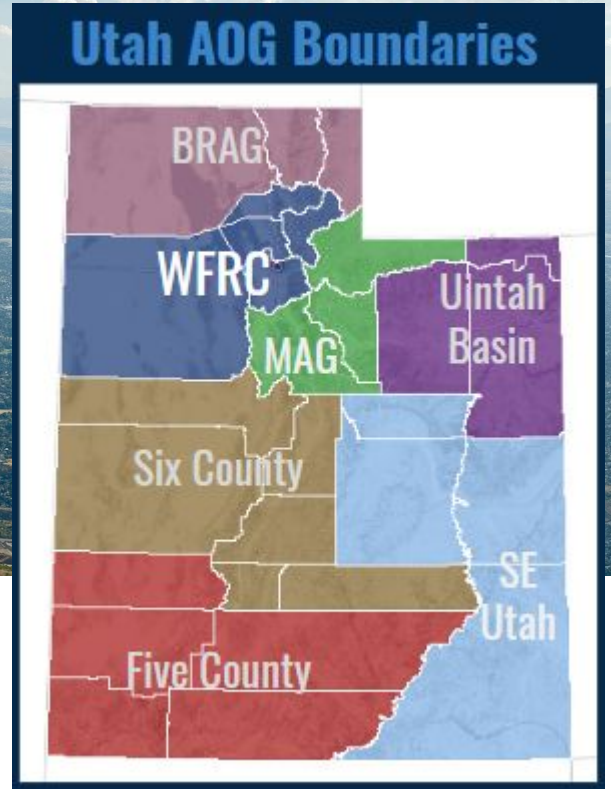
# Economic Development

---



- EDD
- CEDS
- Collaboration & Implementation
- CEDS Content





# Utah's Associations of Governments

APAUtah Spring Conference 2024