



# STOMPING ECONOMIC TRICKS WITH RECREATIONAL TRAILS

DENNIS MARKER, AICP, MPA  
CARSON DeMILLE, PE  
JEN WAKELAND  
MICHAEL WANNER



Spring 2024 Conference  
Cedar City

# INTRODUCTIONS



Jen Wakeland  
"Case  
Manager"



Mike Wanner  
"Skinny"



Carson DeMille  
"Stomper"

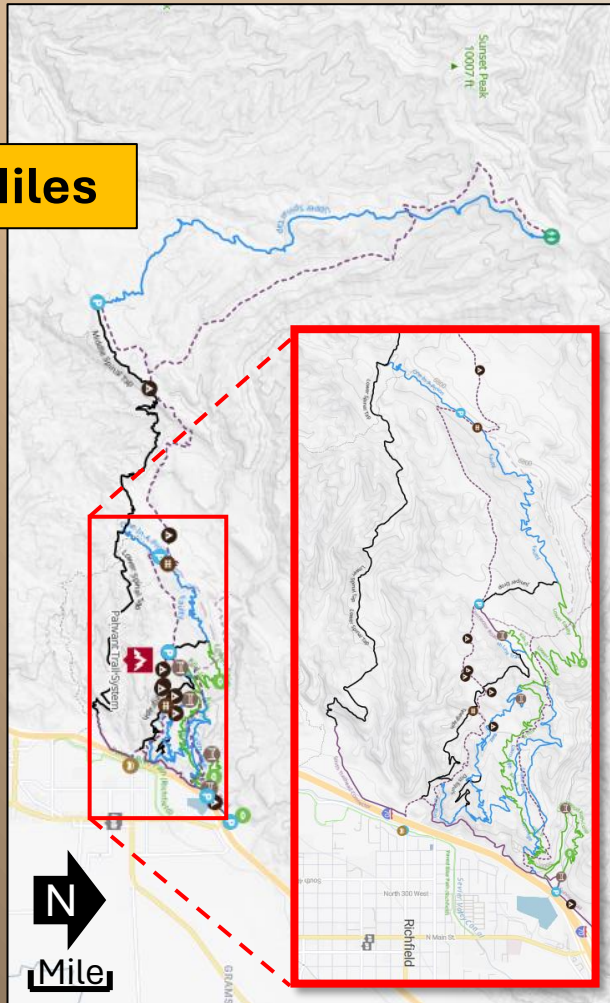


Dennis Marker  
"Enduro"



# The Trails

51 Miles



Pahvant & Glenwood

Richfield

[www.trailforks.com/](http://www.trailforks.com/)

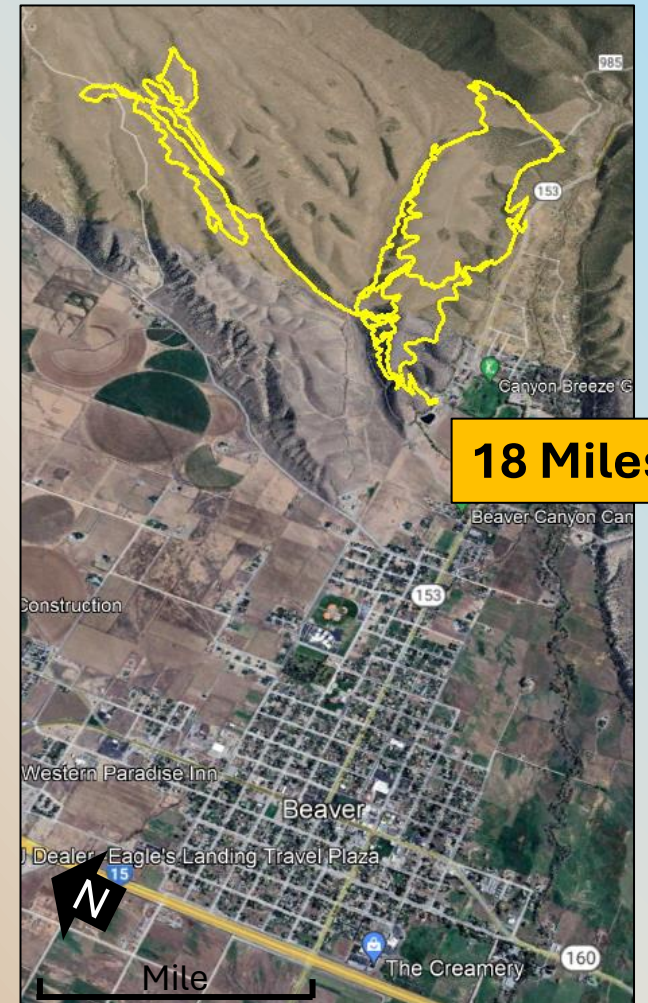
11 Miles



G Hill

Gunnison

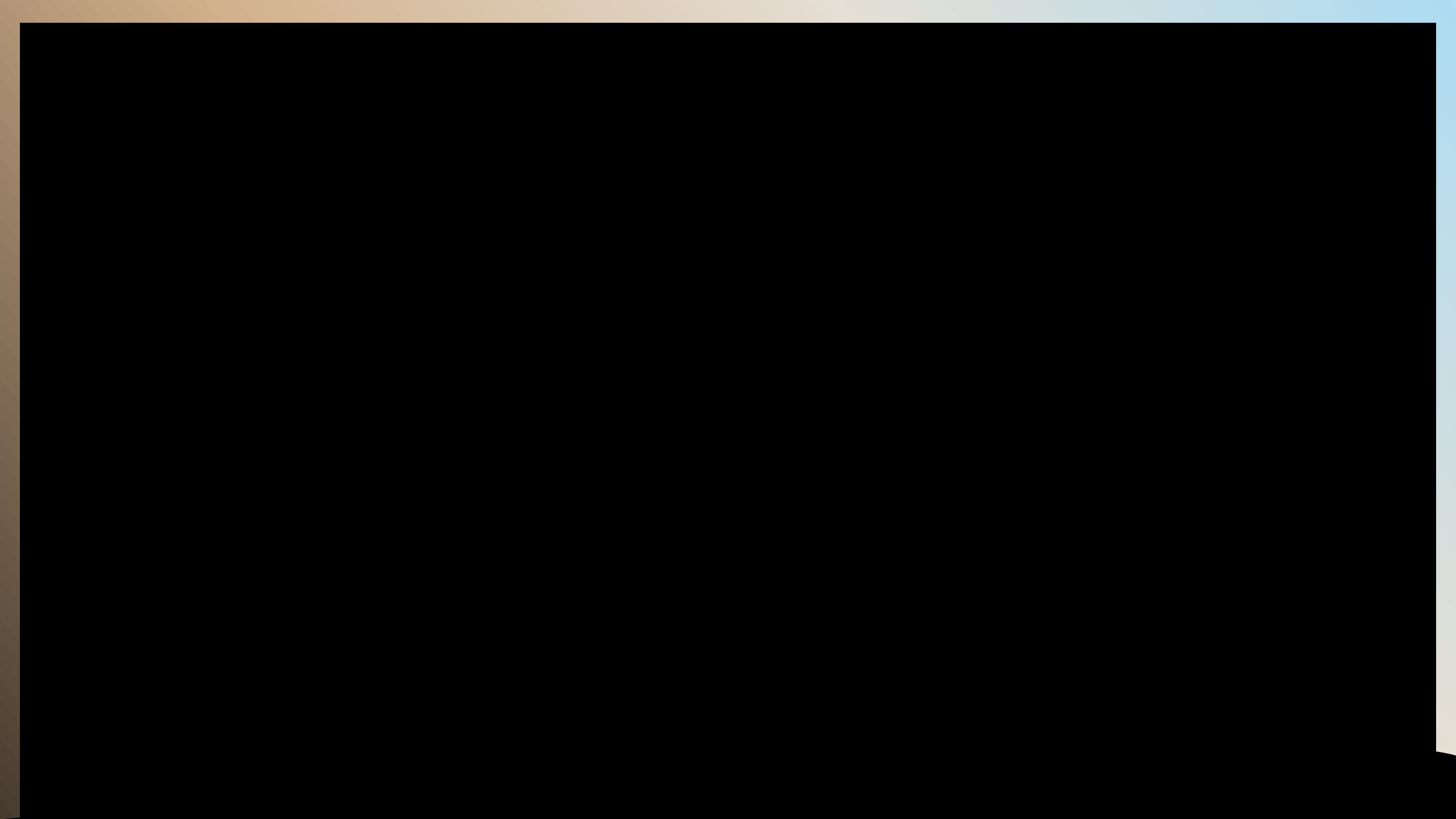
18 Miles



Beaver Bench

Beaver





# The Starting Line



**CRUSHER**  **IN THE TUSHAR**



# Permitting

	Pahvant/Glenwood	G Hill	Beaver
Permitting Entities	US Forest Service BLM UDOT Some Private	SITLA City	BLM Beaver County Canal Company



# The Uphill (Financing)

	Pahvant/Glenwood	G Hill	Beaver
<b>Sources</b>	<ul style="list-style-type: none"> <li>• UORG</li> <li>• RTP</li> <li>• National Forest Foundation</li> <li>• Private Donations</li> <li>• Sevier County</li> </ul> <p>Richfield City as sponsor</p>	<ul style="list-style-type: none"> <li>• 3 UORG</li> <li>• 2 RTP</li> <li>• Private Donations</li> <li>• Volunteers</li> <li>• High School</li> <li>• “In-kind”</li> </ul> <p>Gunnison City as sponsor</p>	<ul style="list-style-type: none"> <li>• UORG</li> <li>• Private Donations</li> <li>• Volunteers</li> </ul> <p>Beaver County as sponsor</p>



# The Uphill (Construction)

	Pahvant/Glenwood	G Hill	Beaver
Who helped	HS trail crew Eagle Scout Projects 1500+ volunteer hours. Final phase with professional trail crew.	HUSCL (Manti Trail builders), City crews, Trail Committee, HS Service Day	Contracted Trail building crews, BLM staff, County employees, HUSCL, NICA Volunteers (250 hrs)





# The Uphill (Construction)



# Maintaining

	Pahvant/Glenwood	G Hill	Beaver
<b>Grooming</b>	Local trails crew and volunteers	Local trails crew and volunteers	BLM agreed to maintain a “usable” level. Public “buy-in” with local users who commit to more thorough and frequent maintenance activities.

## Signage



# The Technical Downhill

	Pahvant/Glenwood	G Hill	Beaver
Races	NICA/UHSCL (1-3 per year) YES Enduro I-CUP	NICA/UHSCL (First Race 10-2024)	NICA/UHSCL (2 Races in 2024) Crusher in the Tushar
Difficulty	1 2 3 4 5 6	1 2 3 4 5 6	1 2 3 4 5 6





# Community Impacts?



The finish line . . . ?





Q&A

APA  
UT



<https://www.youtube.com/watch?v=wyV4ivK5Q5E>

# Thank you

For more information

[www.sevierutah.net/](http://www.sevierutah.net/)

[www.beaver.utah.gov/171/County-Maps](http://www.beaver.utah.gov/171/County-Maps)

[www.gunnisoncityutah.org](http://www.gunnisoncityutah.org)

[www.utahmtb.org/](http://www.utahmtb.org/)

