



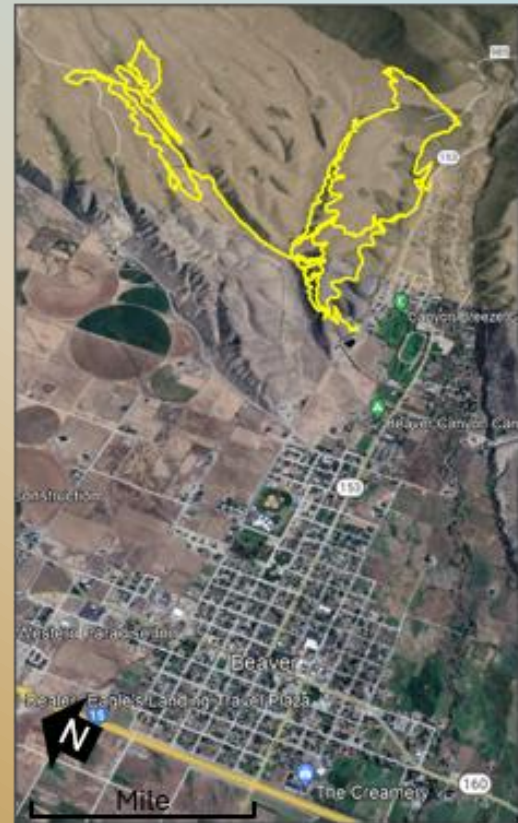
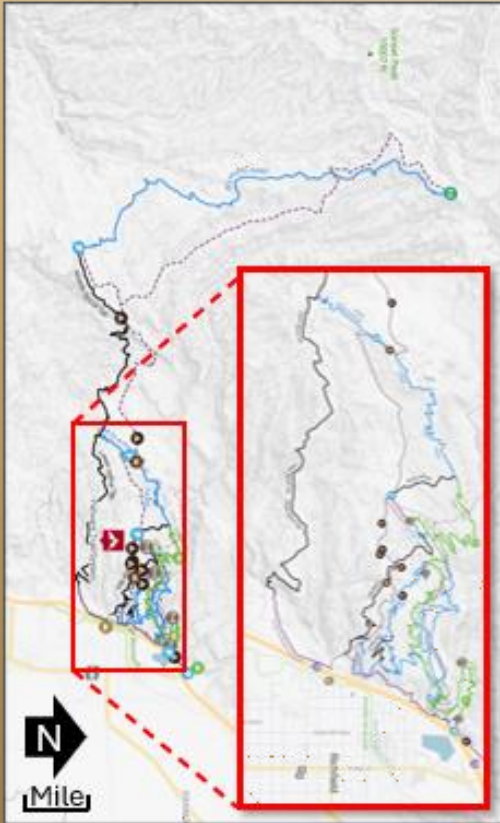
STOMPING ECONOMIC TRICKS WITH RECREATIONAL TRAILS

Trail	Pahvant & Glenwood	G Hill	Beaver Bench
Major City	Richfield, UT	Gunnison, UT	Beaver, UT
Trails Length	51 Miles	11 Miles	18 miles
Permitting Entities	US Forest Service BLM UDOT Some Private	SITLA City	BLM Beaver County Canal Company
Funding Sources	UORG RTP National Forest Foundation Private Donations Sevier County	UORG RTP Private Donations Volunteers “In-kind”	UORG Private Donations Volunteers
Construction means	HS trail crew Eagle Scout Projects Professional trail crew Volunteers	UHSCL (Manti Trail builders), City crews, Trail Committee, HS Service Day, Volunteers	Professional trail crew, BLM staff, County employees, UHSCL, NICA, Volunteers
Volunteer Hrs	1500+	250+	250+
Grooming By	Local trails crew and volunteers	Local trails crew and volunteers	BLM maintains a “usable” level. Locals.
Types	One-way/Two-way, multi- use.	Two-way, multi-use.	One-way/Two-way, multi- use.
Difficulty	Novice to Professional	Novice to Advanced	Novice to Advanced
Races	NICA/UHSCL (1-3 per year) YES Enduro I-CUP	NICA/UHSCL (First Race 10-2024)	NICA/UHSCL (2 Races in 2024) Crusher in the Tusher
Local Economic Impact	\$1 Million + influx	\$250,000 + influx	\$1 Million + influx





Experience the great outdoors and small-town charm with these trail venues.



Pahvant & Glenwood
Richfield

G Hill
Gunnison

Beaver Bench
Beaver

Presenters' Contact Information



Carson DeMille, PE
Project Manager
Jones & DeMille Engineering, Inc.
P: (435) 896-8266 | M: (435) 979-0266
Shaping the Quality of Life



Jen Wakelund
Strategic Development Director
Beaver County, UT
P: (435) 438-6490
jenw@beaver.Utah.gov



DENNIS MARKER, AICP, MPA
Gunnison City Administrator
Gunnison, UT
P: (435) 528-7969 | M: (435) 851-7360
dmarker@gunnisoncity.org



Michael Wanner
G Hill Trail Committee/Owner
Michael Wanner Construction
P: (435) 528-7969
Michael.wanner@gmail.com



2024 Spring Conference
Cedar City