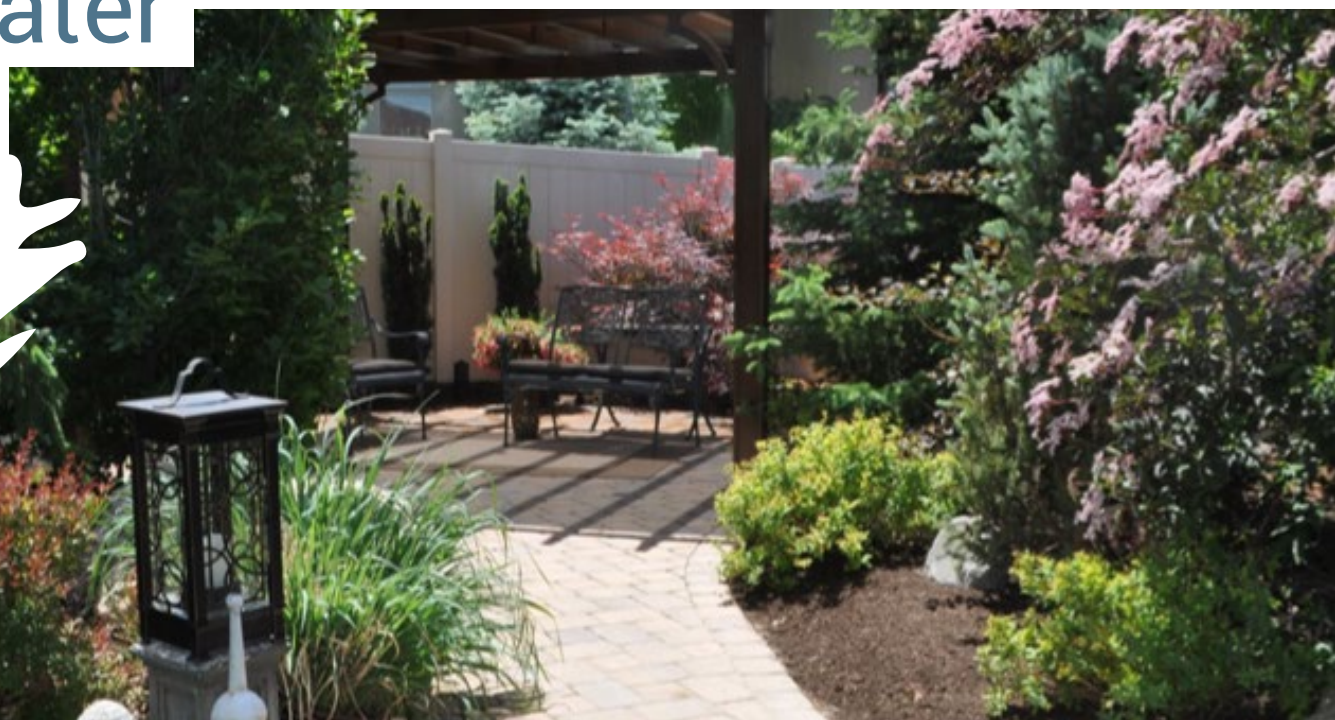


Flowing Towards Savings:

Harnessing Landscape Water
Efficiency for Homes and
Communities





Landscape Incentive Program



Overview

- **Launched May 1, 2023**
- **State proved \$150 /ft² of lawn removed and replaced with water-efficient landscaping**
- **Partnerships with water conservancy districts to offer up to \$3.00 /ft²**
- **Must live in an eligible location**
- **Residential & CII property types**



Apply @ utahwatersavers.com

Why Landscape Incentives?



PC: resourceoregon.org



Apply @ utahwatersavers.com

Why Landscape Incentives?



Apply @ utahwatersavers.com

Why Landscape Incentives?



Apply @ utahwatersavers.com

Landscape Incentive Program Eligibility

Landscape Ordinance for New Construction



Communities outside of a partner water district's service area, including unincorporated areas, should work with the Division of Water Resources. At minimum, the following water-efficient landscape ordinances for new construction are required:

- 1. No lawn in parkstrips.**
- 2. No lawn in areas less than 8' in width.**
- 3. No more than 50% of front and side yard landscaped area in new residential developments is lawn.**
- 4. In new commercial, industrial, institutional and multi-family development common area landscapes, lawn areas shall not exceed 20% of the total landscaped area, outside of active recreation areas.**

Landscape Incentive Program Eligibility



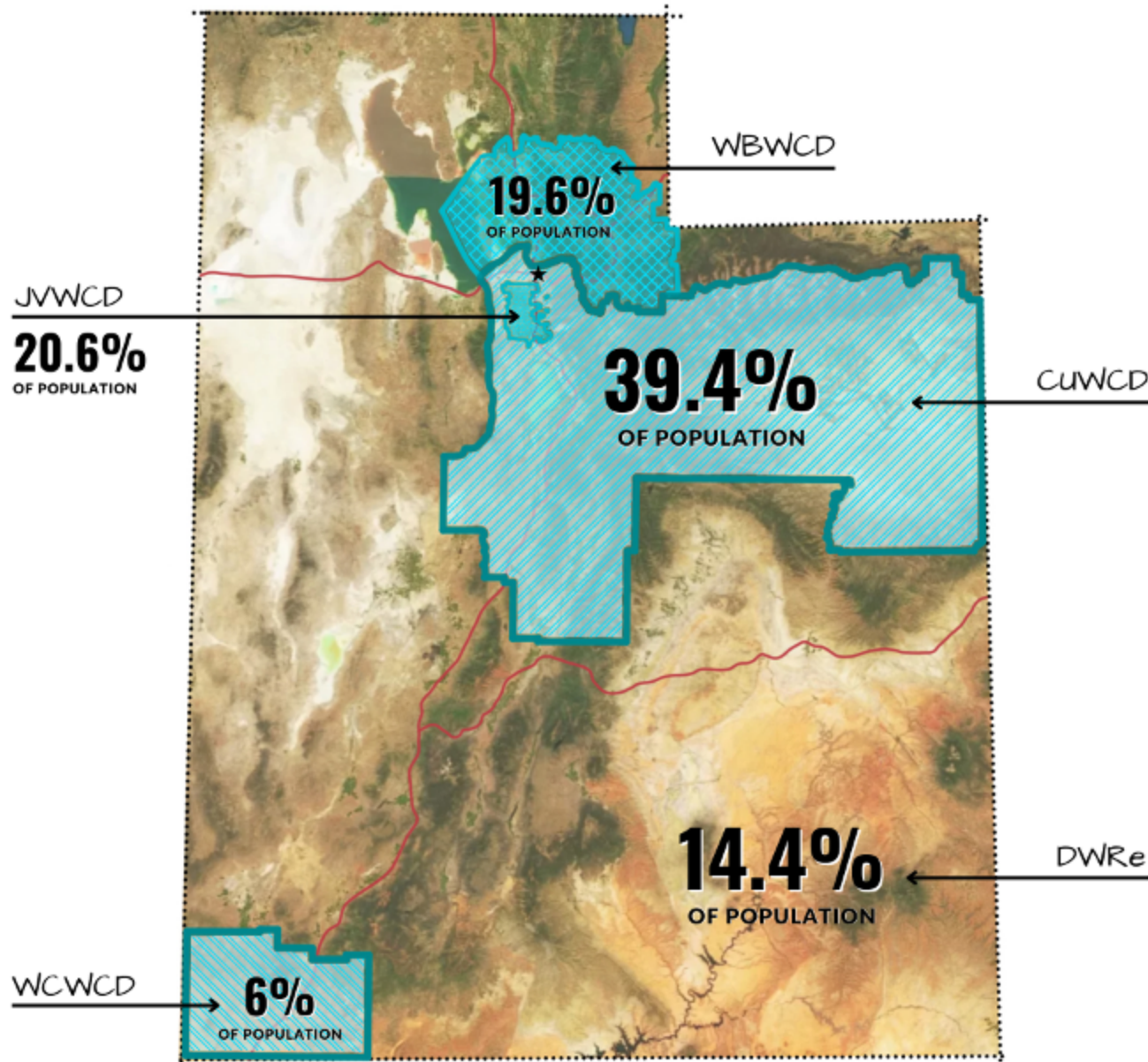
Landscape Ordinance for New Construction

Communities within a partnering water district's service area should work with their district to adopt qualifying landscape ordinances.



- 1. No lawn in parkstrips.**
- 2. No lawn in areas less than 8' in width.**
- 3. No more than 50% of front and side yard landscaped area in new residential developments is lawn.**
- 4. In new commercial, industrial, institutional and multi-family development common area landscapes, lawn areas shall not exceed 20% of the total landscaped area, outside of active recreation areas.**

PARTNERS



Rebate Service Area Map
Population of Utah: 3,402,919

Weber Basin Water Conservancy District (WBWCD)

Population of service area: 665,919
% of total population: 19.6%

Jordan Valley Water Conservancy District (JWVCD)

Population of service area: 702,450
% of total population: 20.6%

Central Utah Water Conservancy District (CUWCD)

Population of service area: 1,342,188
% of total population: 39.4%

Washington County Water Conservancy District (WCWCD)

Population of service area: 203,697
% of total population: 6%

Utah Division of Water Resources (DWR_e)

Population of service area: 489,565
% of total population: 14.4%



Resources



Apply @ utahwatersavers.com

Resources

Utah Water Wise Plants

Overview | List

Find address or place

Search by Name, Zone, or Plant Type | Sort by Botanical Name

- Cypress Leyland** | *X Cupressocyparis leylandii*
Tree suitable for USDA Zones 6 to 10
Water Use: Moderate
Suggested Varieties: Coming Soon
- Yellowhorn** | *Xanthoceras sorbifolium*
Shrub suitable for USDA Zones 4 to 7
Water Use: Moderate
Suggested Varieties: Coming Soon
- Spanish Bayonet** | *Yucca aloifolia*
Succulent suitable for USDA Zones 8 to 11
Water Use: Low
Suggested Varieties: Coming Soon
- Banana Yucca** | *Yucca baccata*
Succulent suitable for USDA Zones 5 to 9
Water Use: Very Low
Suggested Varieties: Coming Soon
- Navajo Yucca** | *Yucca baileyi*

Filter

- Zone: Minimum Viable
- Zone: Maximum Viable
- Plant Type
- Water Use
- Utah Native Plants



Apply @ utahwatersavers.com



Resources



Greek Yarrow | *Achillea ageratifolia*

Perennial suitable for [USDA Zones 4 to 8](#)

Water Use: Low

Suggested Varieties: *Coming Soon*



Fernleaf Yarrow | *Achillea filipendulina*

Perennial suitable for [USDA Zones 3 to 9](#)

Water Use: Low

Suggested Varieties: *Coming Soon*



Apply @ utahwatersavers.com

Statewide Programs



Landscape Incentive

Yard irrigation accounts for up to 70% of household water use. Earn up to \$3/sqft for removing grass on your property (residential or commercial) and replacing it with waterwise landscaping. See eligible cities [here](#).

[Learn more](#)



Smart Controller

Get paid up to \$75 when you purchase and install a WaterSense-labeled smart controller that adjusts the water your yard gets based on local weather and yard conditions. All Utahns are eligible.

[Learn more](#)



Toilet Replacement

Receive up to \$100 by replacing your old toilet with a WaterSense-labeled one. Any toilet manufactured before 1994 may qualify. You may submit up to 2 toilets per application. All Utahns are eligible.

[Learn more](#)



Apply @ utahwatersavers.com



USU Extension



Slow the Flow

INTEGRATING

Water-wise Practices into your

Land Use Code



Sophie Frankenburg
Planner

ELEMENTS OF A LANDSCAPE ORDINANCE

- 1. Hydro-zones + Plant Species lists**
- 2. LocalScapes**
- 3. Use Specific Standards**
- 4. Tree Preservation**
- 5. Site Preservation**

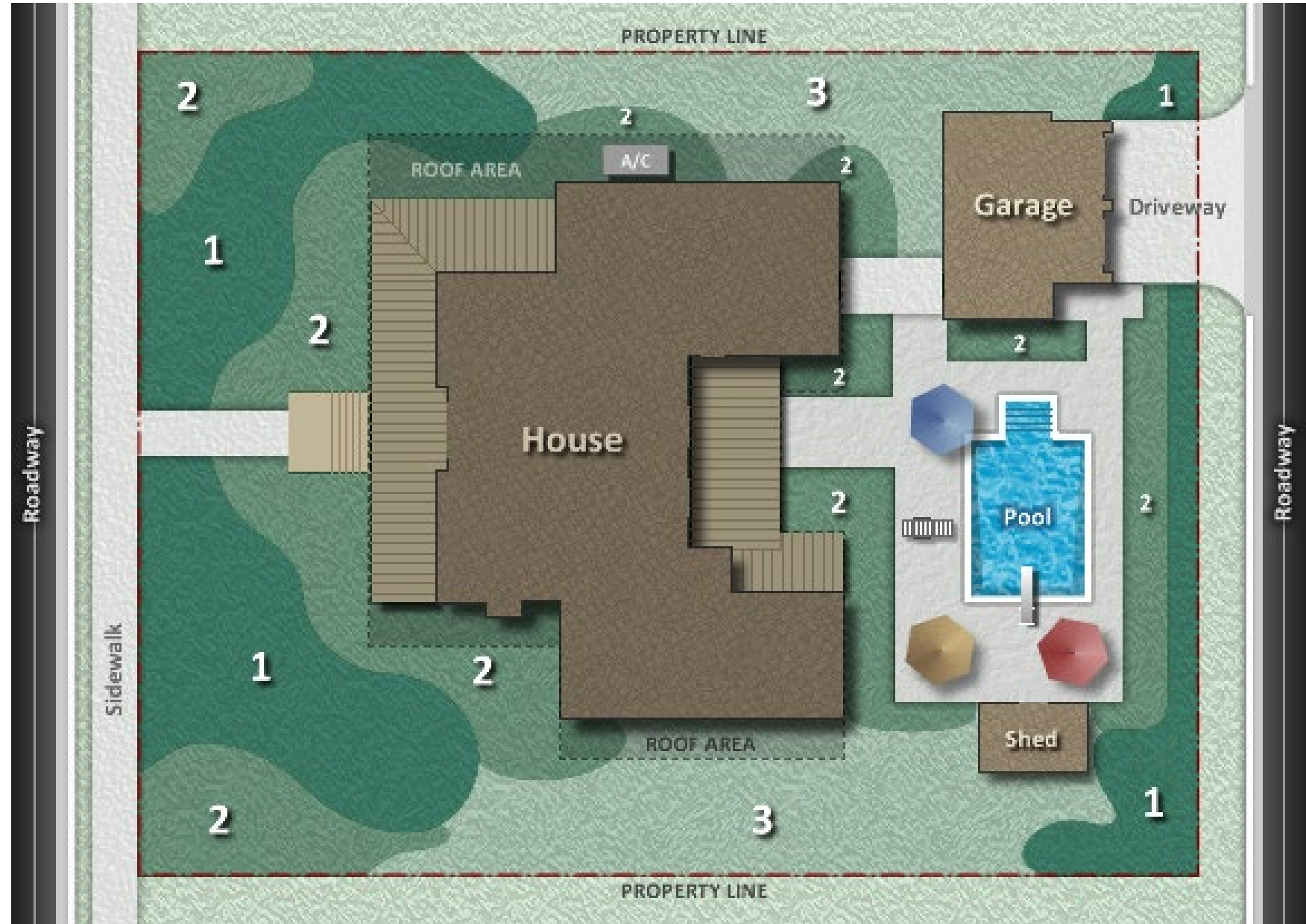


HYDRO-ZONES

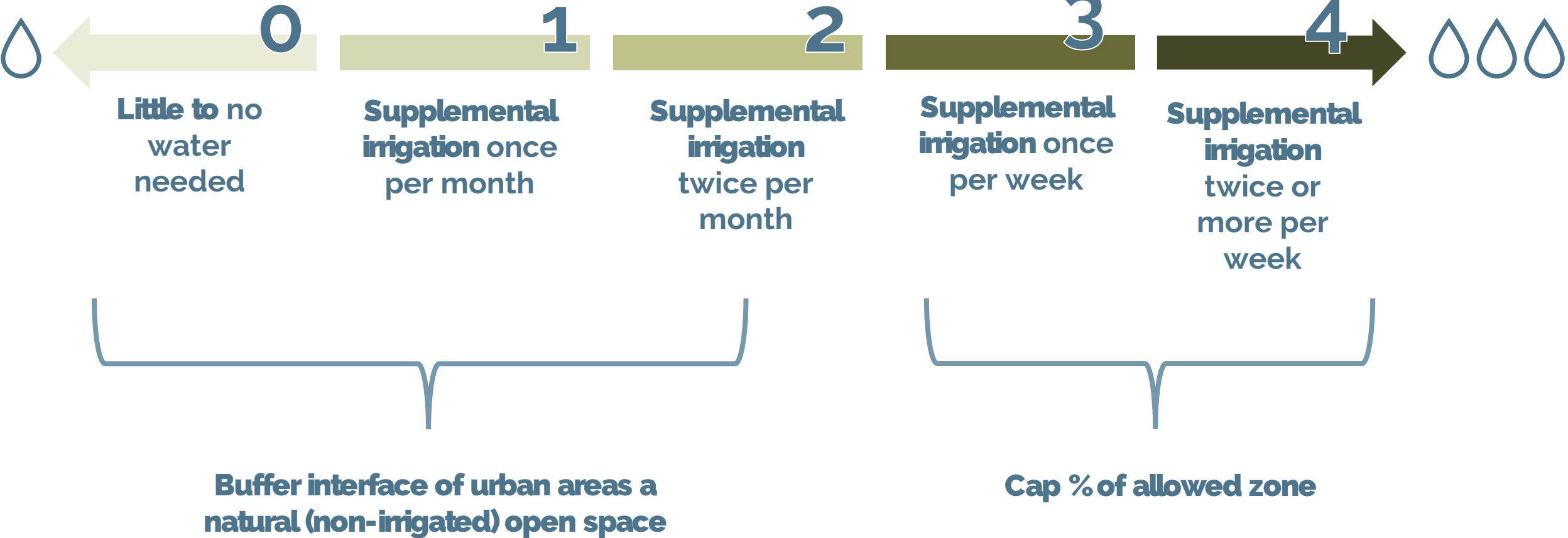
Plants of similar water needs are grouped together



Optimizes water usage: allows for efficient irrigation practices

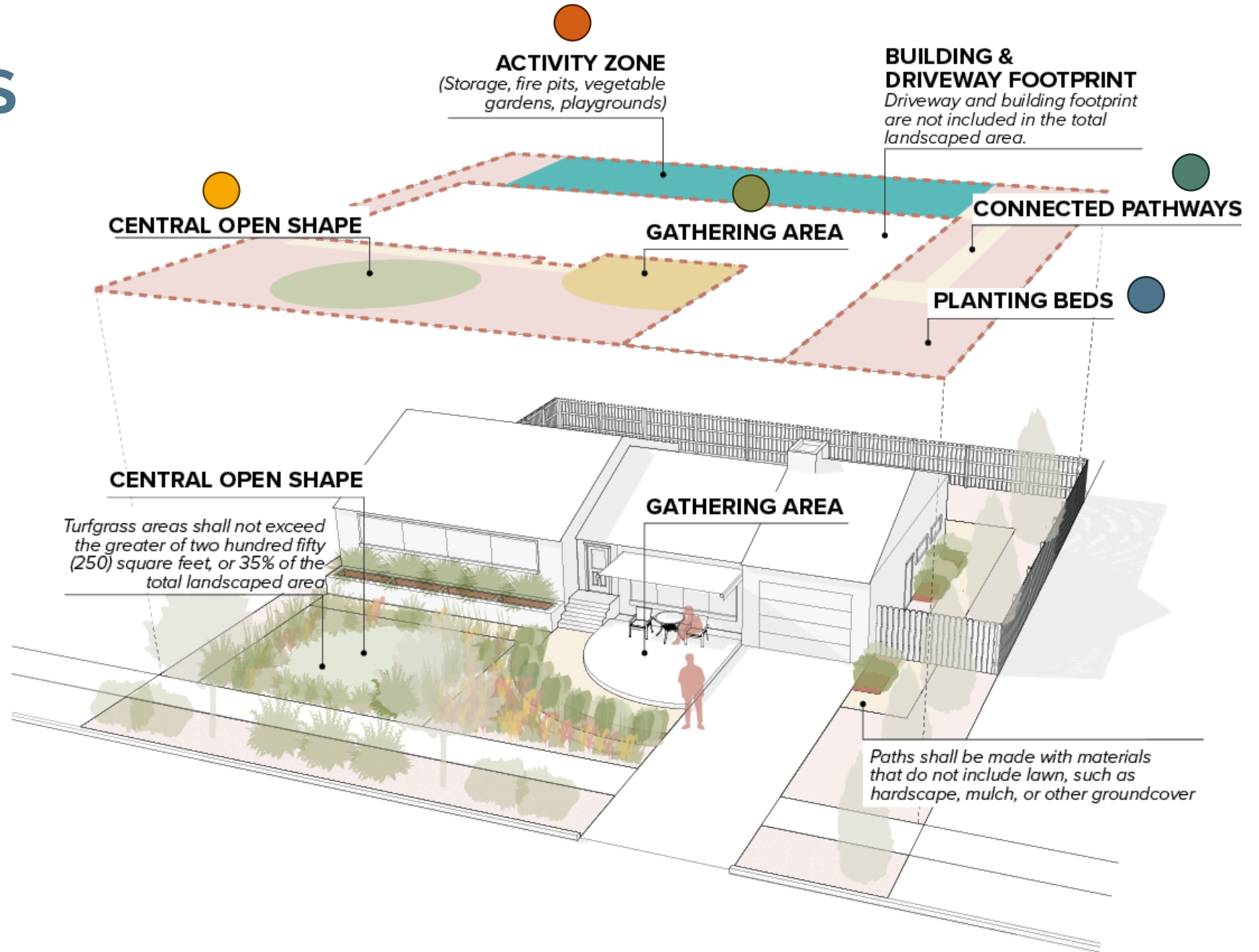


HYDRO-ZONES



LOCALSCAPES

- 1 Central Open Space
- 2 Gathering Areas
- 3 Activity Zones
- 4 Paths
- 5 Planting Beds

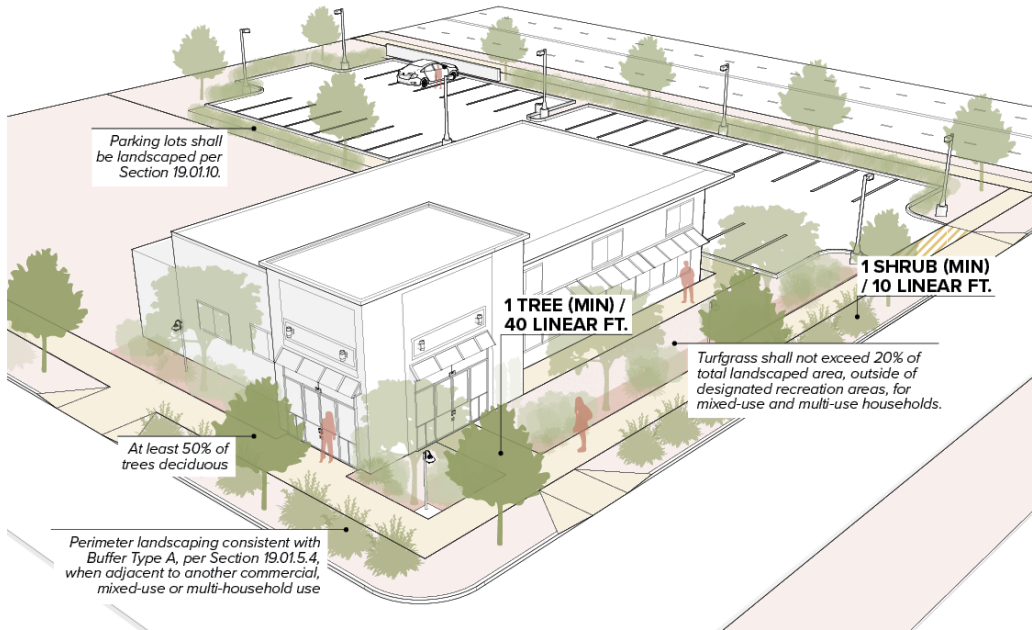


Learn more about LocalScapes!

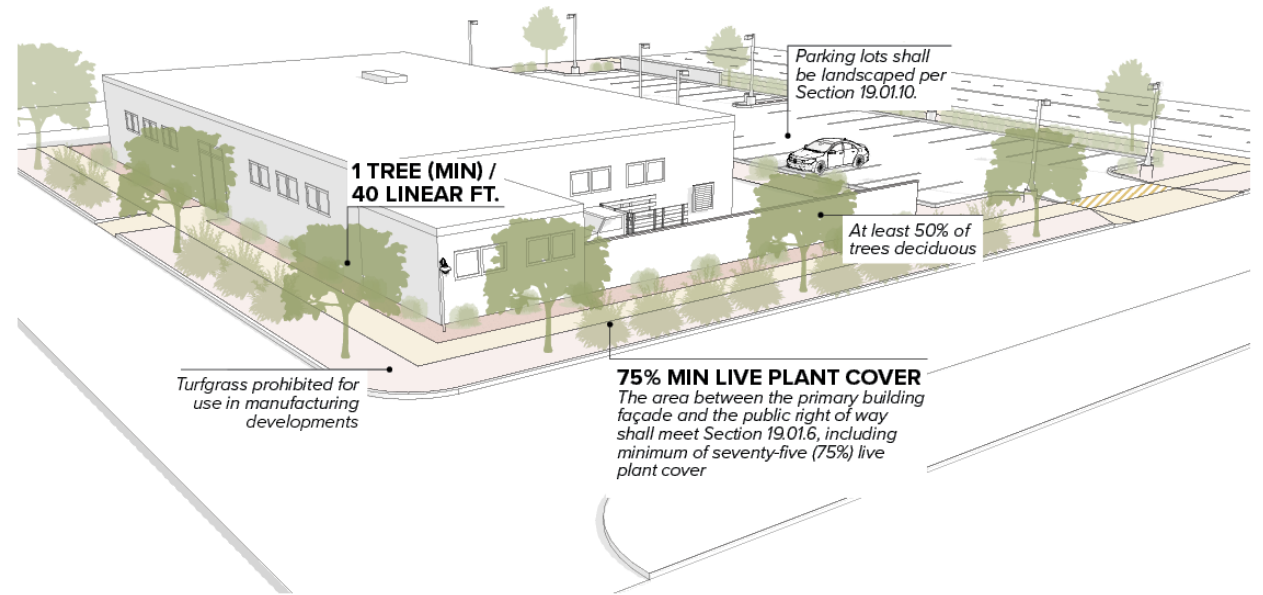
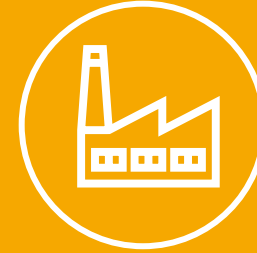


USE SPECIFIC STANDARDS

Commercial, Mixed Use, Multi-Household



Manufacturing



TREE PRESERVATION



TREE CANOPY

- **Reduction in UHI**
- **Community Character**
- **Creates similar cooling affect as turf grass in water-wise landscape**

BENEFITS

- **Cools the soils below**
- **Limits evapotranspiration**



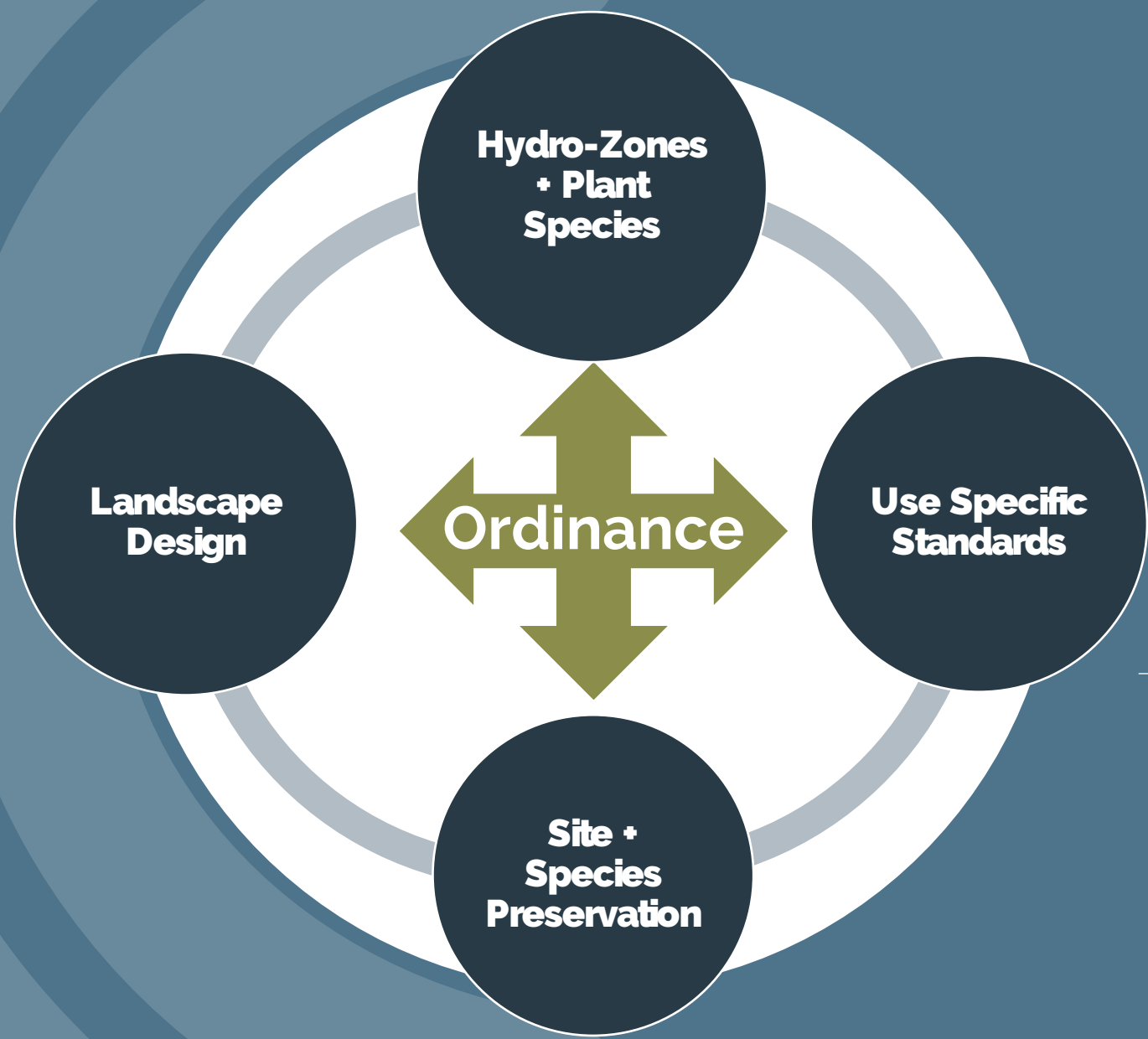
Standards:

- **Tree Removal Permits- size and species**
- **Protected Species**
- **Tree Protection zones- buffering construction**
- **Replacement requirement and ratios**
- **Enforcement mechanisms- penalties or fines for violations**

SOIL AMENDMENTS AND MULCHING

- **Excavation Standards**
- **Introduction of organic materials**
- **Mulching in planting areas**
 - **Shredded Hardwood mulch**





Check out Millcreek City's
Landscape ordinance!



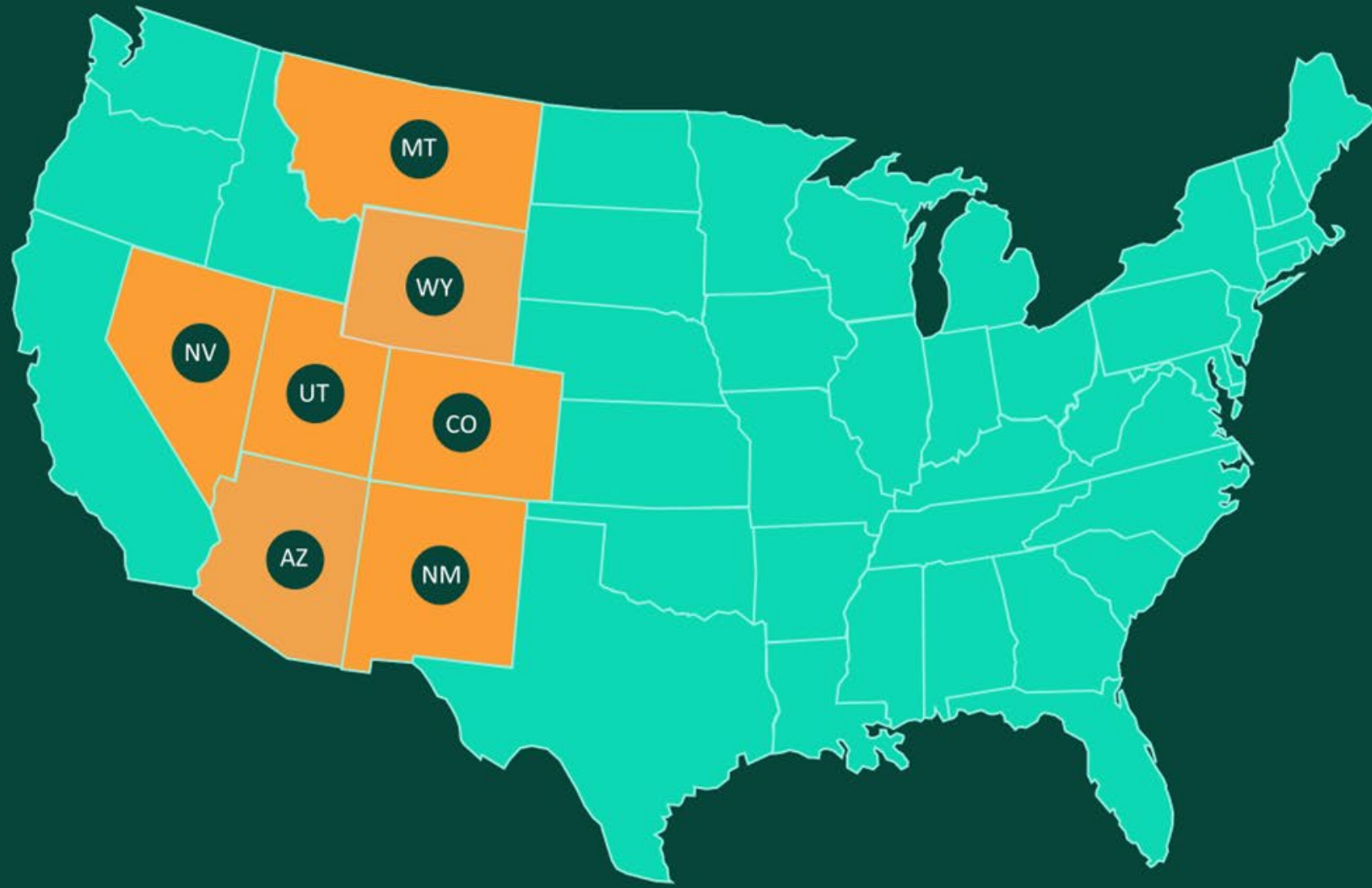
Strategies to Reduce Outdoor Water Demand through the Planning Process

Chelsea Benjamin

Policy Advisor, Healthy Rivers

westernresourceadvocates.org

wra Western
Resource
Advocates®



Western Resource Advocates

- Municipal Conservation
- State Policy
- Integrated Water and Land Use Planning
- Landscape Code Policy
- Research & Reports
- Engaging Communities

WRA works across seven states in the **Interior West** to **protect our climate, land, air, and water.**





Integrating Water and Land Use Planning in Utah

- Governor includes Integrating Land Use & Water Planning in 4-pronged approach to address drought
- 60% of municipal water is used outdoors
- Utah State Legislation
 - SB110
 - Turf Replacement Funding
- Cities and counties taking action to reduce outdoor water demand via codes and incentives



Integrating Water and Land Use Planning

WRA Guide for Planners

- Includes:
 - Model Landscape Codes
 - Conservation Oriented System Development Charges
 - Development Patterns that reduce water used on outdoor landscapes



**INTEGRATING WATER EFFICIENCY INTO LAND USE PLANNING IN THE INTERIOR WEST:
A GUIDEBOOK FOR LOCAL PLANNERS**





Model Codes

State water conservancy districts have model water efficiency standards

All 4 codes include:

- Turf limits
- Living plant material requirements

Unique strategies:

- WaterSense Smart Controller requirements
- 8% lawn limit in WCWCD code





Moab Landscape Code Update

Highlights:

- Limits grass to 10% of a landscape
- Requires smart irrigation controllers and sprinklers
- Water budget of 15 gal/sq ft/season
- Incentivizes graywater reuse and rainwater capture





**A GUIDE TO DESIGNING
CONSERVATION-ORIENTED
WATER SYSTEM DEVELOPMENT CHARGES**



Conservation-Oriented System Development Charges

Basing the price of water connections on projected water use by accounting for:

- Lot size
- Housing type
- Indoor & outdoor efficiency measures

[WRA Guide](#)



Development Patterns that Reduce Outdoor Water Demand

Cluster Development

- Can encourage denser development requiring less landscaping/water resources
- Can protect agricultural lands and open space





Utah Growing Water Smart

- 3-day workshops
- City and County teams work to integrate their water and land use planning
- 30% of Utahns live in cities or counties that have participated in GWS
- 12-month Action Plans
 - Landscape Code Changes
 - Turf Replacement programs



Utah Growing Water Smart Resources

- Guidebook
- Technical Assistance opportunities post-workshop
- Provo
 - Commercial water use management project

UTAH GROWING WATER SMART

The Water-Land Use Integration
Guidebook for Southwestern Utah





Artificial Turf
Report

What is *not* a water wise landscape?

- **All rock landscapes**
- **Artificial Turf**
- **Why?**
 - Increase Urban Heat Island Effect
 - Increase stormwater run off
 - Chemical Concerns
 - Water Concerns
 - Difficult to Recycle



Thank You!

The logo for Western Resources Advocates (wra) is a teal circle containing the lowercase letters 'wra' in a bold, black, sans-serif font.

EMAIL: Chelsea.Benjamin@westernresources.org

WEBSITE: WESTERNRESOURCEADVOCATES.ORG

QUESTIONS?



Candace Schaible
cschaible@utah.gov



Sophie Frankenburg
sfrankenburg@logansimpson.com
<https://logansimpson.com/>



Chelsea Benjamin
Chelsea.benjamin@westernresources.org
<https://westernresourceadvocates.org/>

